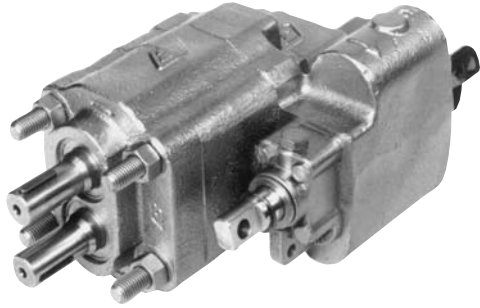
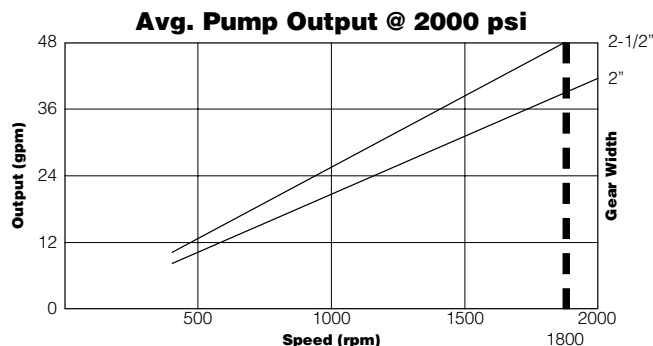


# Series C101/C102



## Heavy-Duty Hydraulic Power for Dump Trucks and Trailers

- 39 and 48 gpm @ 1800 rpm
- Pressures to 2500 psi
- Speeds to 2400 rpm
- 2- and 3-line installations
- Choice of mountings
- Air shift kits available
- Relief valve protects pump and cylinder



### Reliable Pumps

Terre Kosen has been the dump body industries pump/valve combination of choice for over 8 years. They're built on our heavy-duty P30 and P50 pump frames.

Terre Kosen's pumps feature one-piece drive shafts and gears made of hardened, alloy steel and supported on heavy-duty roller bearings. Pressure balanced thrust plates provide an effective seal for continuous high efficiency and add to the outstanding service life of the pump.

### Relief Valve Protection

A patented internal relief valve protects both the pump and the cylinder circuit. With the 3-position valve in the raise position, the relief valve acts as a system relief to protect against overloading. In the hold position, it acts as a port relief protecting the cylinder from shock loads commonly encountered during loading.

In three-line hookup, oil passing over the relief valve is vented to tank. This allows for continuous or intermittent operation. A 2-line hookup is used for intermittent operation only.

Terre Kosen's pump/valves are rated for pressures to 2500 psi and are available in 9.5 gpm to 62 gpm (at 1800 rpm) models. Twin drive shafts permit them to be driven in either direction. The valve spools can be operated with a lever/cable or an air shift. Relief valves are factory set at 2000 psi.

### Performance Data

Maximum speed is 2400 rpm. Operating pressures above 2000 psi are subject to the approval of our product support group. Performance data are the results of a series of tests of production units and are not necessarily representative of any one unit. Oil reservoir temperature was 120° F, viscosity of 150SUS at 100° F. Requests for more specific information should be directed to our component sales representatives.

C101/C102 Parts break down list can be found on page 79

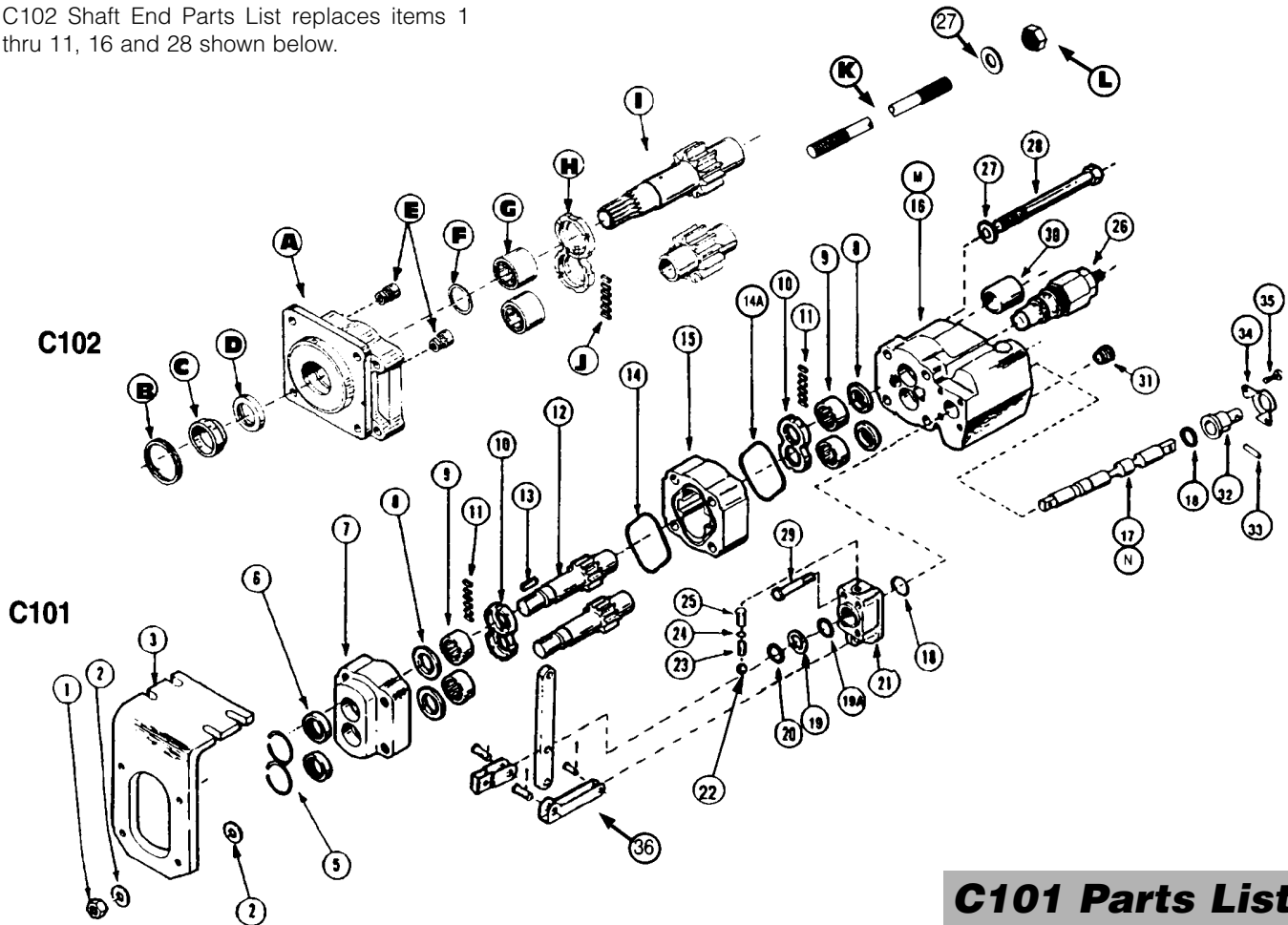
# Series C101/C102

Seal Kit for C101 - CM-HC101  
Seal Kit for C102 - CM-HC102

## C101/C102 Parts Breakdown Typical Parts

Item	Description	Part No.	Req.	Item	Description	Part No.	Req.	Item	Description	Part No.	Req.
A	Shaft End Cover	313-5033-435	1	F	Ring Seal	391-2585-009	2	J	Pocket Seal	391-2882-050	12
B	Snap Ring	391-2686-065	1	G	Roller Bearing	391-0381-905	4	K	Stud	391-1425-110	4
C	Seal Retainer	391-3383-087	1	H	Thrust Plate	391-2185-912	2	L	Hex Nut	391-1451-076	6
D	Lip Seal	391-2883-115	1	I	Gear Set 2"	313-2920-230	1	M	Port End Cover		1
E	Check Assembly	393-3681-001	2		2 1/2"	313-2925-230	1	N	Valve Spool		1

C102 Shaft End Parts List replaces items 1 thru 11, 16 and 28 shown below.



### C101 Parts List

Item	Description	Part No.	Req.	Item	Description	Part No.	Req.	Item	Description	Part No.	Req.
1	Hex Nut	391-1451-076	4	15	Gear 2"	314-8020-100	1	27	Washer	391-3784-029	4
2	Washer	391-3784-028	8		Housing 2 1/2"	314-8025-100	1	28	Cap Screw 2"	391-1401-111	4
3	Bracket (optional)	314-0100-005	1	16*	Port End Cover		1		2 1/2"	391-1401-110	4
5	Snap Ring	391-2681-493	2	17*	Valve Spool		1	29	Cap Screw	391-1401-082	4
6	Lip Seal	391-2883-096	2	18	"O" Ring	391-2881-103	2	30	Sleeve (optional)	391-3283-052	1
7	Shaft End Cover	314-5039-201	1	19A	Wiper Ring	391-2883-147	1	31	Pipe Plug - 1" NPT	391-2282-006	1
8	Ring Seal	391-2585-009	4	19	Retainer Ring	391-3782-126	1	32	Spool End Cap	391-1881-073	1
9	Roller Bearing	391-0381-905	4	20	Snap Ring	391-2688-003	1	33	Spiral Pin	391-2085-009	1
10	Thrust Plate	391-2185-912	2	21	Detent Cap	314-0100-003	1	34	Bracket	391-0981-010	1
11	Pocket Seals	391-2882-050	12	22	Detent Ball	391-0282-009	1	35	Socket Hd. Cap Screw	391-1402-063	2
12	Gear Set 2"	314-2920-640	1	23	Detent Spring	391-3581-383	1				
	2 1/2"	314-2925-640	1	24	Lock Washer	391-3788-002	1	36	Handle Ass'y (optional)	355-9100-009	1
13	Shaft Key	391-1781-021	1	25	Detent Retainer	391-2583-079	1				
14	Gasket Seal	391-2884-021	2	26	Relief Valve	355-9001-067	1				

\* Items 16, 17 M and N are not serviceable parts.